



XGEO GC80

-  **Smart Throughput**
Improves workflow efficiencies and enhances user satisfaction.
-  **Smart Dose Management**
Dose with minimal exposure.
-  **Smart Image Quality**
Maximizes diagnostic information.



Distributed by:

NeuroLogica
A Subsidiary of Samsung Electronics Co., Ltd

©2013 NeuroLogica All rights reserved.
NeuroLogica reserves the right to modify the design, packaging, specifications and features shown herein, without prior notice or obligation. Ver.1 / June 2013

Manufactured by: Samsung Electronics Co. Ltd
Health and Medical Equipment Business Team
416 Maetan3dong, Yeongtong-gu, Suwon-si
Gyeonggido 443-742, Korea

For additional information,
please visit www.NeuroLogica.com
or call 1-877-564-8520



XGEO GC80

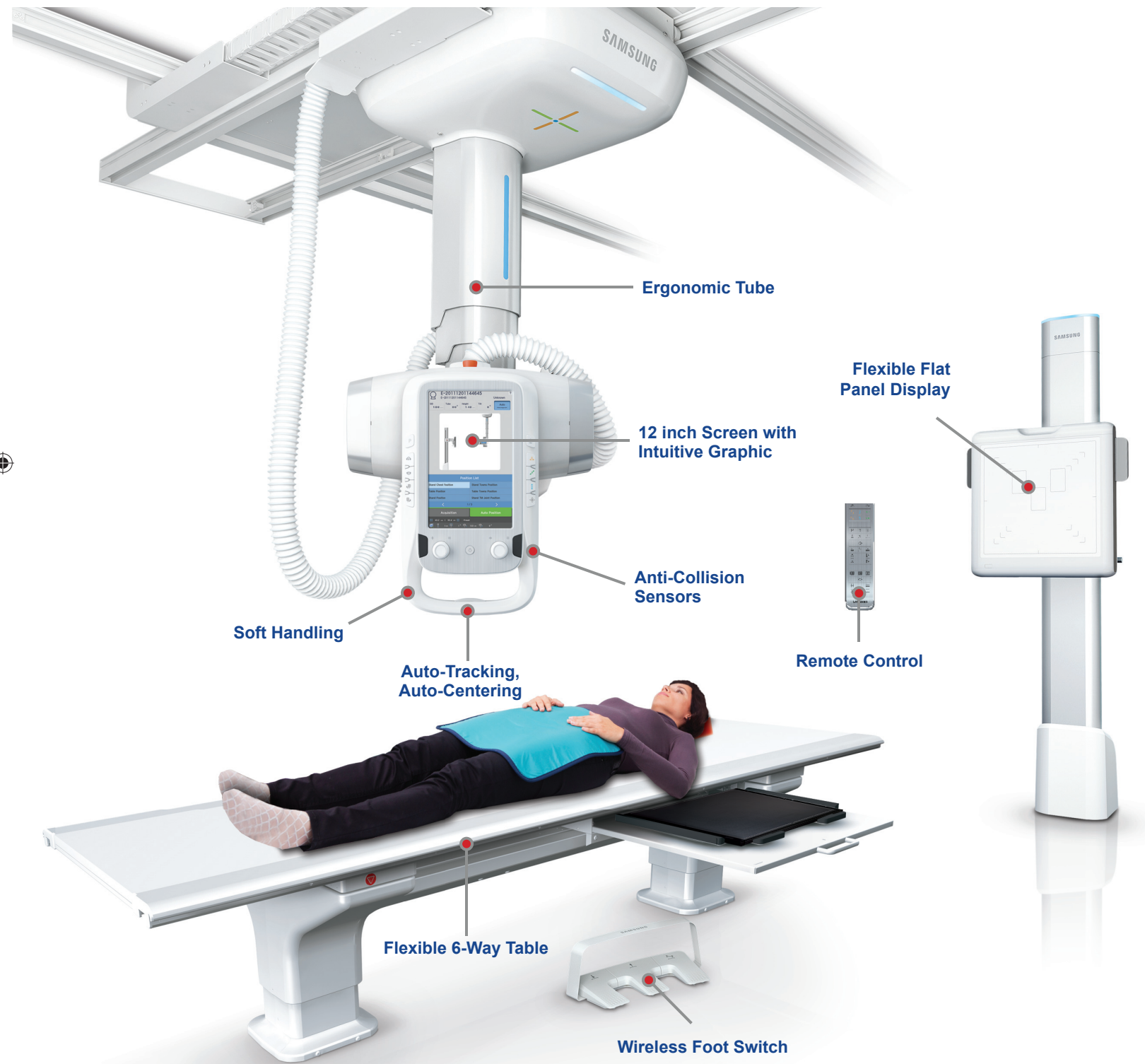
SMART DIGITAL RADIOGRAPHY SYSTEM



Distributed by:

NeuroLogica
A Subsidiary of Samsung Electronics Co., Ltd

SMART THROUGHPUT

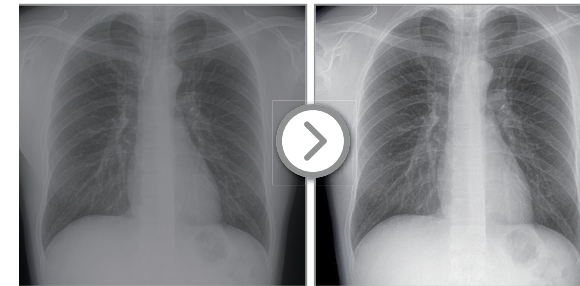


SMART IMAGE QUALITY

ALCOS (Adaptive Local COntrast Stretching)

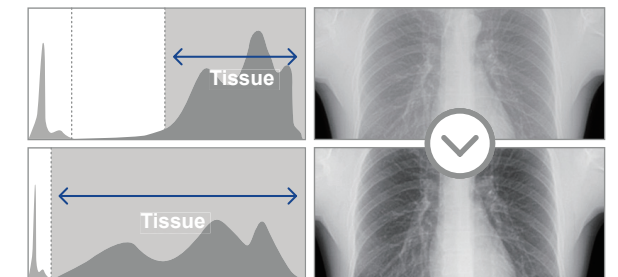
Adaptive Multi-Scale Processing

Controls the multi-frequency level, depending on the part or tissues being imaged, with proprietary image enhancement software



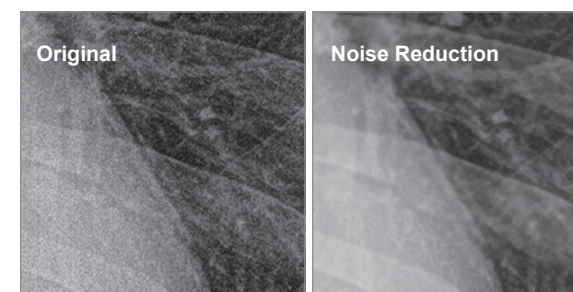
Region-of-Interest Enhancement

Reveals fine anatomical details for additional diagnostic information by histogram expansion



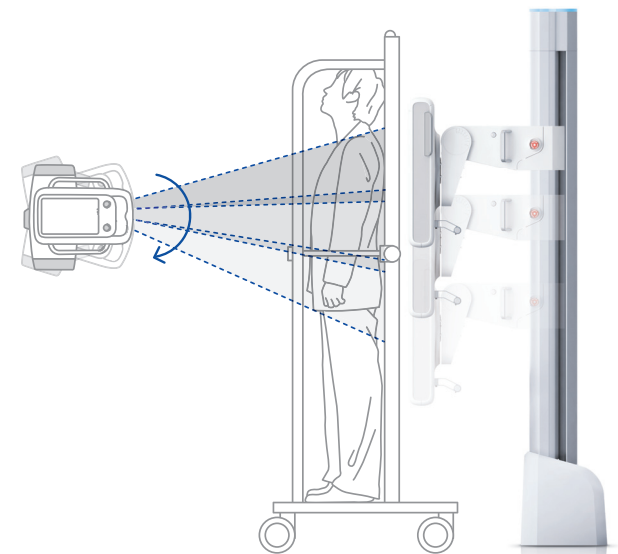
Noise Reduction

Optimizes image details with a noise filter and edge modeling process

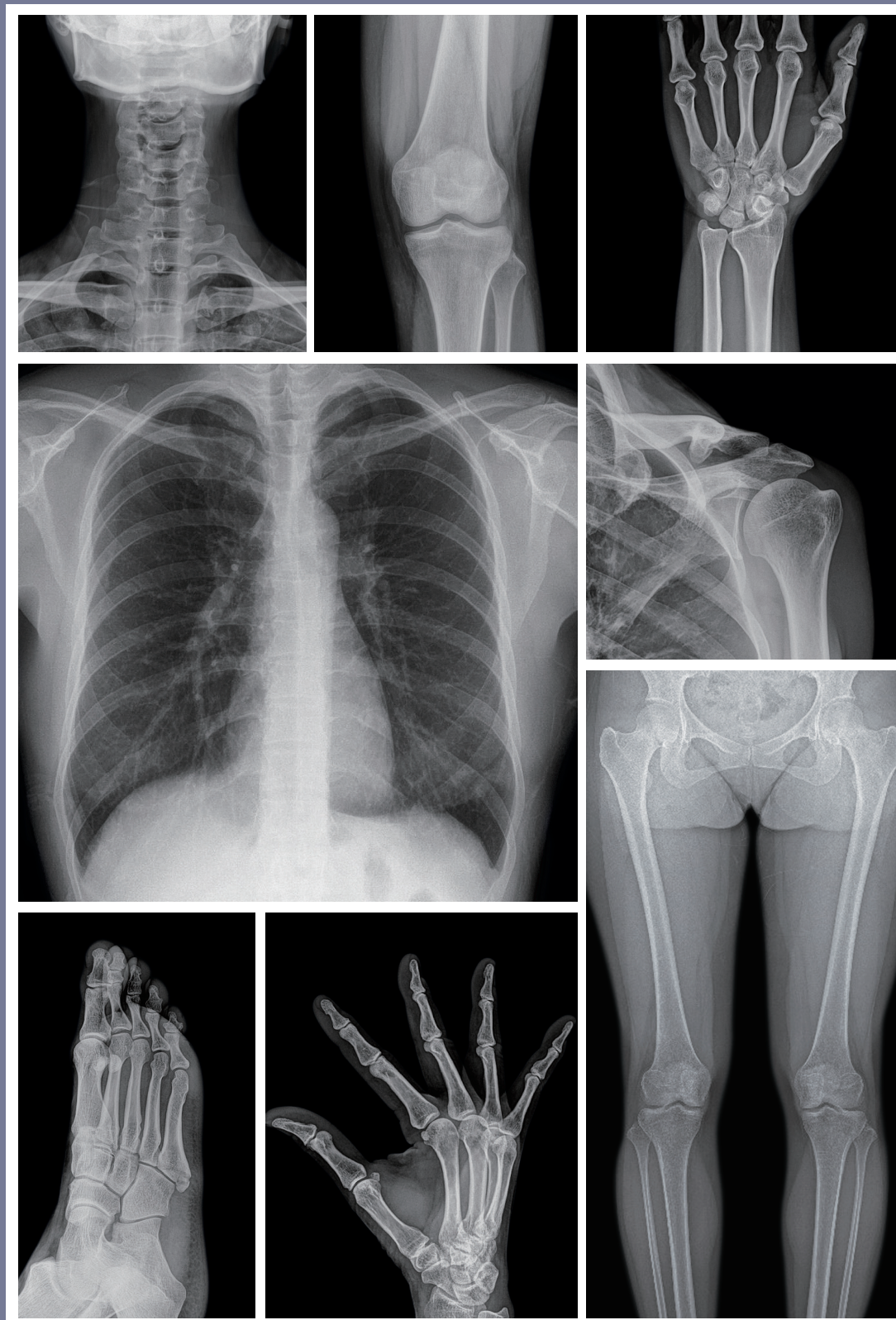


Smart Stitching

Creates full body image without gaps or over-coverage



△+ HIGH QUALITY IMAGES

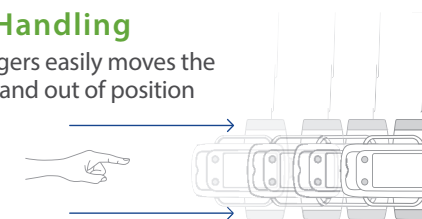


SMART THROUGHPUT

ERGONOMIC

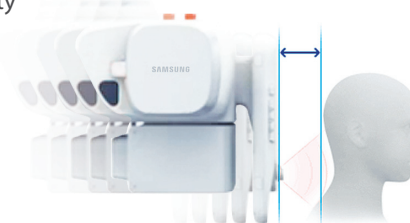
Soft Handling

Two fingers easily moves the tube in and out of position



Anti-Collision Detectors

Detect patient location and provide added patient safety



Ergonomic Tube Head

Auto-tracking and auto-centering streamline workflow efficiencies

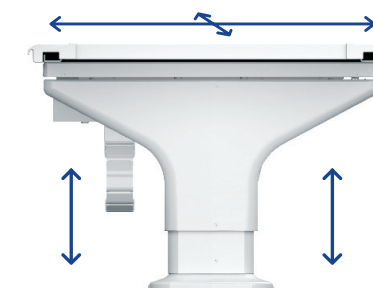


XGEO GC80

Flexible 6-Way Table

220kg/484 pound capacity with flexible 6-way motion along x, y, z axis

Mirrors tube and detector position



Flexible Flat Panel

State-of-the-art Samsung display technology

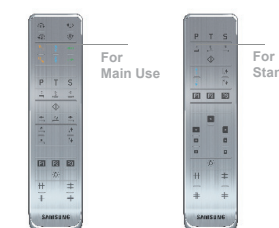
Tilting angles of -20° to +90°



WIRELESS

Remote Control

Directs the tube, table and detector with three keys



Wireless or Wired Foot Switch

Hands-free tube and table direction



SMART THROUGHPUT

Graphical User Interface (GUI)



Image Review

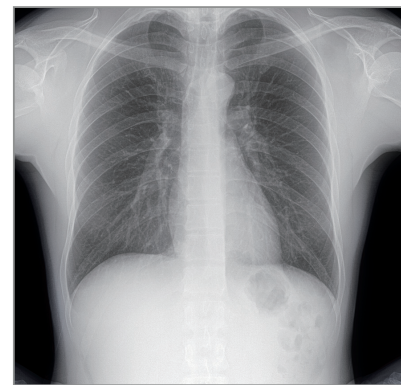
Large 12 inch screen quickly displays images for review prior to sending to workstation or PACS



Positioning

Simple graphic interface for the tube and workstation

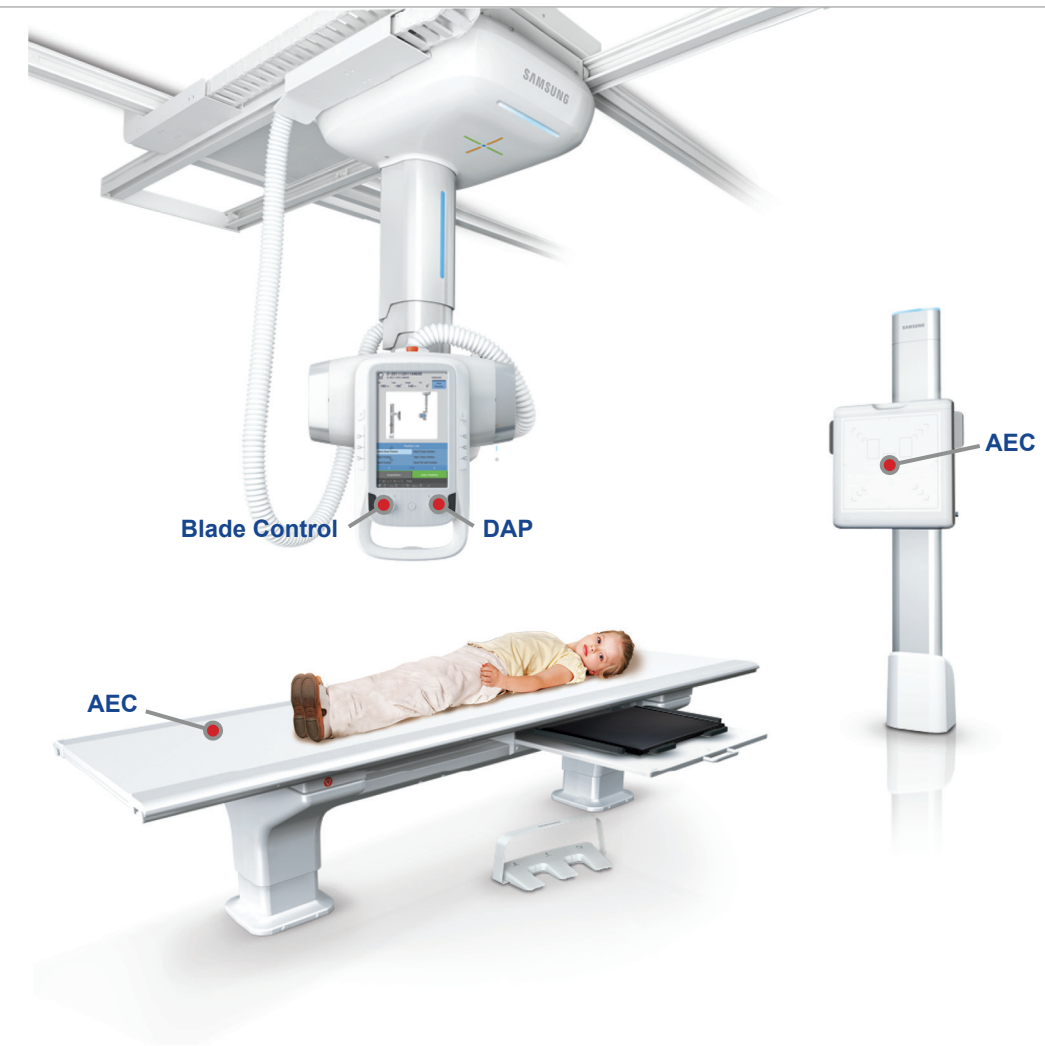
Tube location reinforced with audio and color assignments



Standardized Protocols

Enhance workflow efficiencies with programmed standardized protocols

SMART DOSE MANAGEMENT



Blade Control

Customizes the radiation exposure for each patient with 4-way independent blade control

Dose Area Product (DAP)

Automatically records and documents each patient's radiation exposure

Automatic Exposure Control (AEC)

Prevents excessive radiation exposure while ensuring quality images